

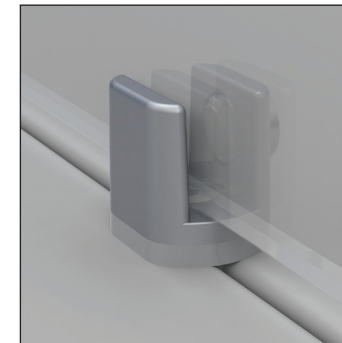
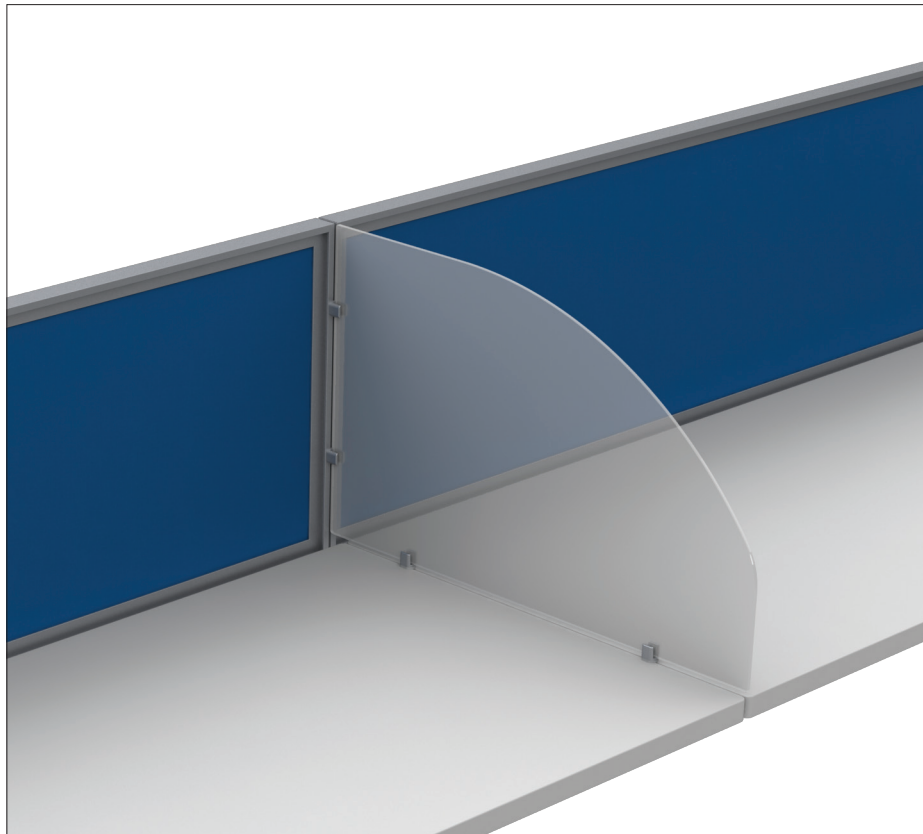
### **Lateral Dividers (Glazed Screens)**

Lateral dividers can create stylish boundaries and add a contemporary feel to office environments. Plus, dividers have been shown to help reduce noise pollution thus helping to promote a healthier and more productive environment for all.

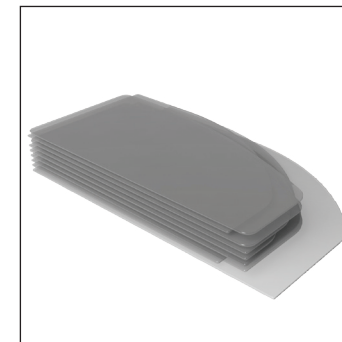




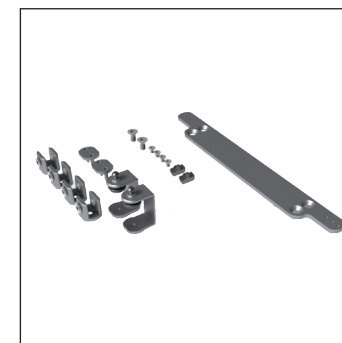
# Glazed Screens



- Adjustable zinc die cast clamps, with a satin plated finish, will fit panels from 4mm to 8mm thick.
- The clamps feature soft tipped securing screws to prevent damage to glass or acrylic panels.
- Desktop C - clamps, to the same finish, feature a soft foot to prevent damage to the furniture and adjust to 26mm thick worktops.
- Wedge clamps fit into a 2mm gap between work tops to secure the glazed panels on long runs of desking.

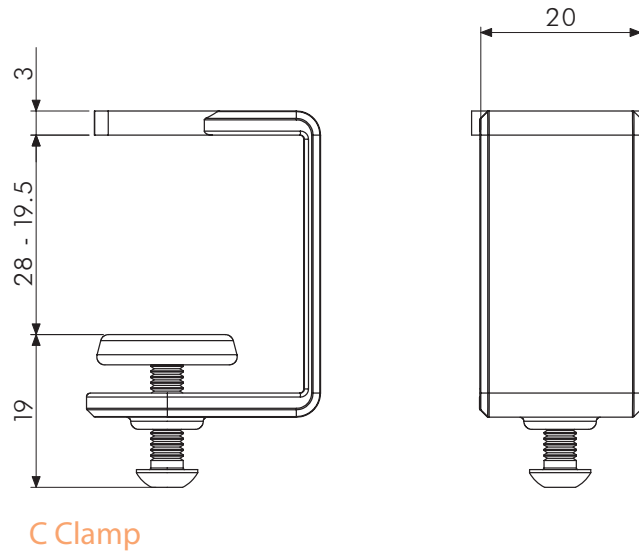
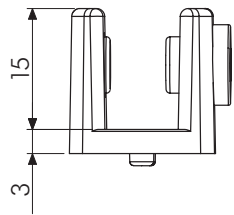


- Fixing plates are available for a wide range of furniture screens – *please enquire for options.*
- All fixings included as part of the kit.
- Glass and acrylic screens are available in a huge range of shapes, sizes and finishes – *please enquire for options.*
- Standard patterns of glazed screen are shown on the PDF download.
- Glass panels have ground and chamfered edges and are toughened to BS 6206A.

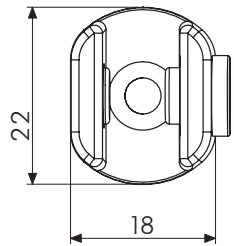


## Glazed Screens

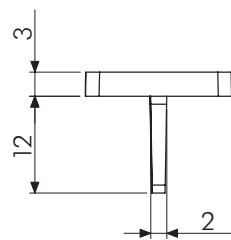
|                            |                                   |
|----------------------------|-----------------------------------|
| <b>Sizes</b>               | See drawings opposite             |
| <b>Mounting</b>            | See drawings opposite             |
| <b>Construction</b>        | Glass clamps - zinc die casting   |
|                            | C clamps - zinc die casting       |
|                            | Wedge clamps - zinc die casting   |
|                            | Hammer nuts - pressed steel       |
| <b>Finish &amp; Colour</b> | Mounting plates - aluminium plate |
|                            | Glass clamps - zinc plated, satin |
|                            | C clamps - zinc plated, satin     |
|                            | Wedge clamps - zinc plated, satin |
| <b>Packaging</b>           | Hammer nuts - zinc plated, satin  |
|                            | Mounting plates - anodised, clear |
|                            | Individually bagged fixing kits   |



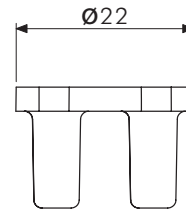
C Clamp



Glass Clamp



Wedge Clamp



## Ordering Information

Available on request. Please call us to discuss options.

